

# FIT



## MULTIPLE LASTS

### WOMEN - NARROW

About 30% of central European women have relatively narrow feet and prefer our narrow last which is 4mm slimmer than the medium one.

### WOMEN - MEDIUM

A female foot is not a smaller copy of a male foot. It has a unique shape. This is why we use women-specific lasts.

### MEN - MEDIUM

Our medium lasts are your choice if you have average sized feet in width and you are happy with what other brands use as their universal standard.

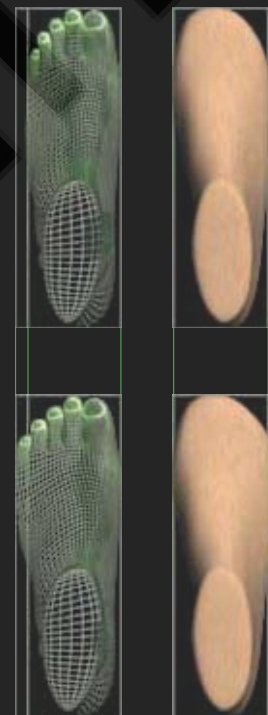
### MEN - WIDE

Did you know that your feet can change their shape with time? Heavy use of your feet – through mountaineering for example – can result in a significant widening. For those that need some extra space we offer wide lasts which are 4mm wider in the toe area.



Andrea Maruna  
SALEWA alpineXtrem Athlete

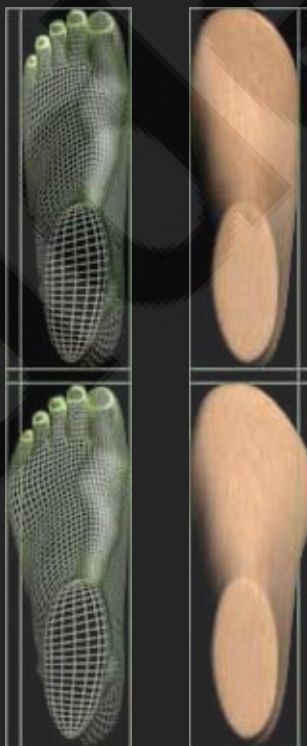
### WOMEN NARROW



WS 5 UK Narrow: 89 mm

WS 5 UK Medium: 93 mm

### MEN MEDIUM



MS 8 UK Medium: 99 mm

MS 8UK Wide: 103 mm

### WOMEN MEDIUM



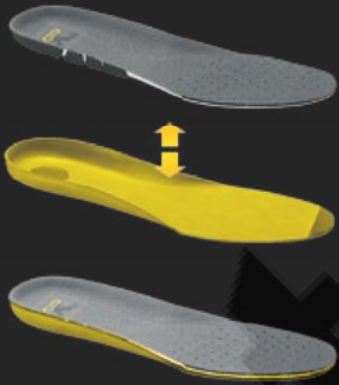
Roger Schali  
SALEWA alpineXtrem Athlete



## MULTI-FIT FOOTBED

The truth is, our foot is a three-dimensional body. It is defined by length, width and height.

Only SALEWA offers a footbed that allows an individual height customization of the fit.



- 1) SALEWA Anatomic Footbed
- 2) Custom Fit Layer
- 3) SALEWA Multi-Fit Footbed



# FIT

## SALEWA "Y" 3D LOCKING SYSTEM

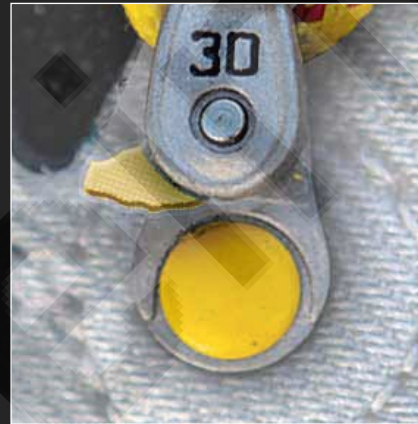
A blisterfree fit through a lacing system that embraces the entire foot.

The SALEWA "Y" is anatomically positioned around the malleolar pads and is directly connected to the 3D locking system through power wires. It locks and supports the heel without an impact on the Achilles tendon. The 3D locking system allows the athlete to customize the shoe into three individual lacing zones. Particularly at the forefoot, precision is crucial for a blisterfree mountaineering experience.



### ADJUST

Regulate your lacing by pulling your laces towards you. Letting go will not make them slide down thanks to the special self locking system.



### OPEN

Pull the tab down to open the lace lock and release the tension.







LOCK

LOCK

LOCK

TM

RETEX

3F

LOCK



# FLEX

**3F**  
SYSTEM

## FLEXIBILITY TO AN ATHLETE IS LIKE FUEL FOR AN ENGINE

The greatest mistake is to limit the freedom of movement of an athlete's foot.

At SALEWA we believe nature is the best designer, so why change perfection?

We offer freedom of movement where the mountaineer needs it and provide hold where it's needed too.





extrem

GORE-TEX

SALOMON

SALOMON

SALOMON™



# SUPPORT



## ALPINISTS GO WHERE OTHERS DON'T

We endeavor to cross the most challenging surfaces on the planet. When you're moving sideways at steep angles, your ligaments are pushed to the limit.

SALEWA footwear provides full support while still offering freedom of movement.

### FOOT SUPPORT FACTS

26 BONES & 33 JOINTS

MORE THAN 100 MUSCLES

NETWORK OF BLOOD VESSELS

MORE THAN 100 TENDONS

A 3D wireframe model of a human foot, rendered in a light blue/cyan color. The model is shown from a side profile, with the foot pointing downwards. Several green laser-like lines and white arcs are overlaid on the model to illustrate engineering concepts. One arc is labeled with the Greek letter alpha (α) and is positioned around the ankle area. Another arc is labeled with the Greek letter beta (β) and is positioned around the heel area. A green line runs diagonally across the foot, and another green line runs horizontally across the bottom of the foot. The background is dark with a large, faint 'SALEWA' watermark.

FOOT SUPPORT ENGINEERING





**ANALYZING FOOT MOVEMENT**



**TESTING IN ALPINE CONDITIONS**



# 100% BLISTERFREE

## NUMEROUS INTER-DEPENDENT FACTORS THAT ELIMINATE BLISTERS

A correct and therefore three-dimensional fit through half-sizing in length, multiple lasts in different widths and a multi-fit footbed that allows a volume customization. The climbing lacing and 3D system allows the most precise fore-foot control without compromising comfort due to three independent lacing zones.

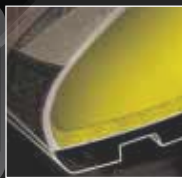
The 3F System supports the entire foot and thus reduces friction thanks to an unmatched heel retention – an area particularly prone to blisters. With the right materials of both socks and boots that keep you dry and cushion your feet we guarantee: 100% blisterfree.



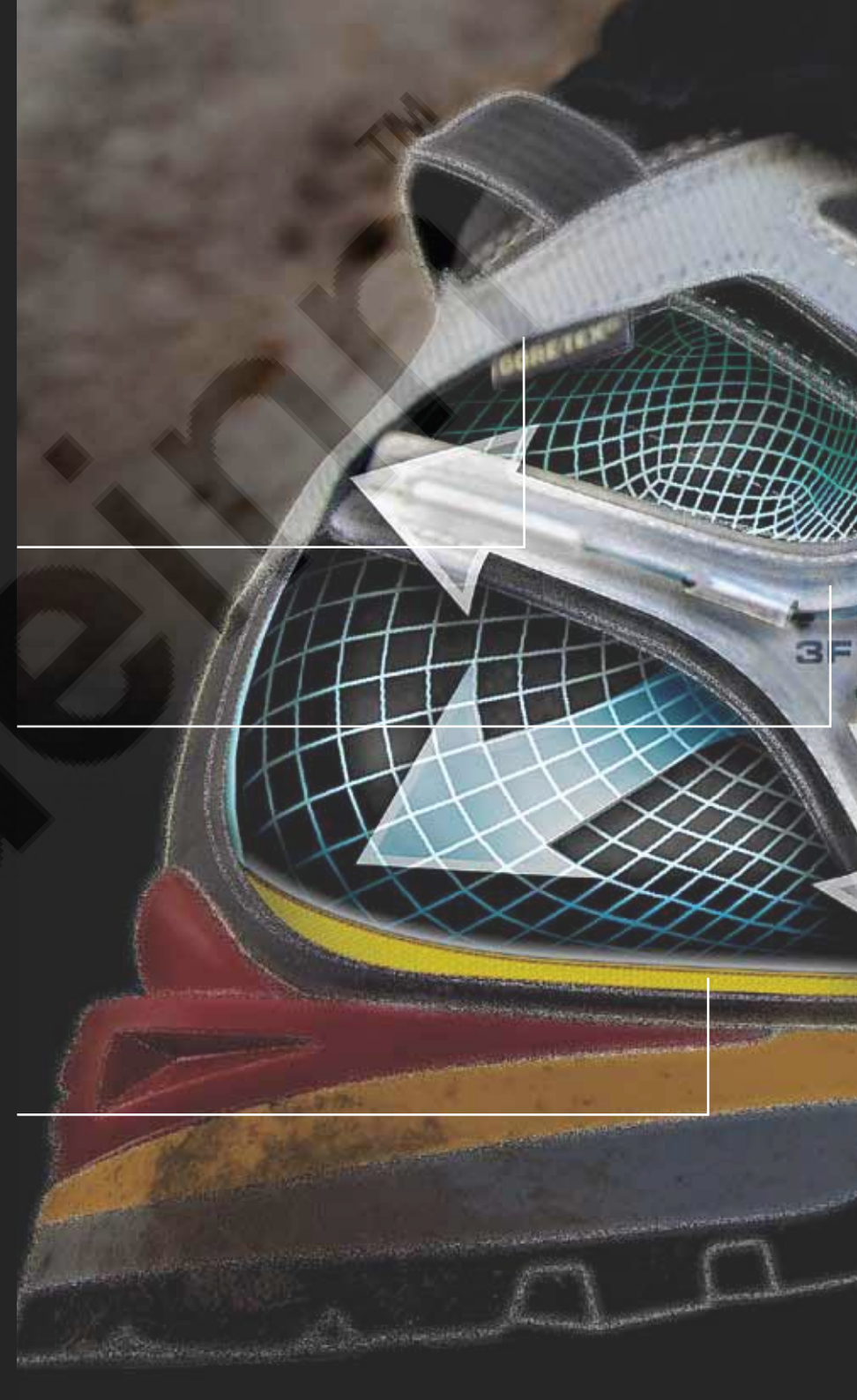
**DRY:** Our linings keep you dry and thus blisterfree.



**FIT:** The connection of the SALEWA "Y" to the 3D lacing distributes the lacing force among the whole foot and controls the movement of the heel.



**MULTIPLE FIT FOOTBED:** Only Salewa offers an individual volume customization.





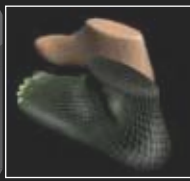
**3D LACING:** Dividing the shoe into three areas allows the athlete to fine-tune between comfort and performance.



**CLIMBING LACING:** More accurate lacing in the toe area gives more support and performance.



**TOE AREA:** Perfect fit for the toes leads to perfect balance and comfort.



**MULTIPLE LASTS:** Only when there is enough room for the foot there is no friction. No friction – no blisters.



## MOUNTAINEERING

FOR TECHNICAL MOUNTAINEERING PERFECT FOOTWEAR IS FUNDAMENTAL FOR SUCCESS. SALEWA FOOTWEAR STANDS FOR BEST IN CLASS QUALITY, FANTASTIC SUPPORT TO WEIGHT RATIO, HIGHEST GRADE MATERIALS AND INNOVATIVE TECHNICAL SOLUTIONS THAT IMPROVE YOUR PERFORMANCE.

THE  
**ALPINE FIT**  
100% BLISTERFREE



### 3D LACING

Three automatic locking points with a patented set at forefoot to ensure maximum customization in fit.



### 3F POWER

Unbeatable combination of flexibility, ankle support and precision in fit. Improved with a steel wire for additional heel containment. Anatomically positioned.



### 3S COMBI

Triple density microporous rubber midsole for ultimate edging performance on rocks. TPU Insert at heel for perfect compatibility with semi-automatic crampons.



### VIBRAM

Technical mountaineering Vibram® outsoles are a must on this kind of high performance alpine footwear. We offer the Teton on our more snow and ice oriented boots and the well-known Mulaz for the dry and rocky surface-oriented models.

